



شرطة رأس الخيمة  
RAS AL KHAIMAH POLICE

مرجان  
Marjan

رأس الخيمة  
ras al khaimah  
هيئة تنمية السياحة  
tourism development authority

New Year's Eve

# New Year's Eve 2024 Celebration Guide

[www.rakpolice.gov.ae](http://www.rakpolice.gov.ae)



rakpoliceghq



# Important Numbers

Toll Free for calling Ras Al Khaimah Police for inquiries and non-emergency reports via

901

Toll Free for calling Ras Al Khaimah Police for emergency reports of any event via

999

Toll Free for calling National Ambulance via

998

Toll Free for calling Civil Defense via

997

Toll Free for calling Ras Al Khaimah Transport Authority via

8001700

Al Jazeera Al Hamra Comprehensive Police Station

072054414

For inquiries and suggestions, please contact us via WhatsApp.





# Routes for Public

**There are two access routes to the Al Jazeera Al Hamra area (Al Marjan)**

- The route of Sheikh Mohammed bin Zayed Street - Al Shuhada Street towards Al Jazeera Al Hamra Roundabout and then Al Marjan.
- The route of Mohammed Bin Salem Street towards Al Jazeera Al Hamra to Al Marjan Island.



In the event that visitors wish to reach one of the commercial centers in the Emirate of Ras Al Khaimah other than (Al Hamra Mall) or inside the Emirate, they can take Al Abir Street or Sheikh Mohammed bin Zayed Street.



# Parking Lot

There are (6) parking lots for all visitors to attend the fireworks in Al Jazeera Al Hamra area:

01

**Parking Lot (Jais):**



the capacity of this parking lot is more than (5000) vehicles, and all visitors can watch Al Marjan Celebration through the vehicle without the need to step out of the vehicle.



**Parking Lot (Yanas):**



02

the capacity of this parking lot is more than (2500) vehicles, and all visitors can watch Al Marjan Celebration through the vehicle without the need to step out of the vehicle.

03

**Parking Lot (Julphar A):**



the capacity of this parking lot is more than (13000) vehicles. All visitors can stop their vehicles and take specific routes to attend Al Marjan Celebration.



## ▪ Note:

- All parking lots are characterized by the availability of public services.
- Jais and Yanas parking lots are characterized by the availability of a mobile store and restaurant kiosks.





# Parking Lot

There are (6) parking lots for all visitors to attend the fireworks in Al Jazeera Al Hamra area:



## Parking Lot (Julphar B):

04

taxicabs are available to transport visitors from other areas to the celebration area (Al Marjan), as follows: -

- Al Bayt Mitwahid
- Al Manar Mall Commercial Center
- Eid Grand Musalla  
(behind Sheikh Zayed Mosque)

## 05 Parking Lot (Al Rams):

This parking lot capacity is more than (3000) tents and is intended for camping and characterized by the possibility of camping to attend the New Year's Event.



## Parking Lot (Dhaya):

06

This parking lot is intended for camping trailers and its capacity is more than (2000) camping trailers.

### ▪ Note:

- All parking lots are characterized by the availability of public services.





# Parking Lot (Jais)

## Access Routes

- For those coming from the Emirate of Ras Al Khaimah, it is preferable to take Sheikh Mohammed Bin Salem Road (E11) to enter the parking lot.
- For those coming from the Emirate of Dubai via Sheikh Mohammed bin Zayed Road (E311), then take the second exit from Sheikh Mohammed bin Zayed Roundabout to Sheikh Mohammed bin Salem Road (E11) towards Al Marjan Island.
- For those coming from the Emirate of Dubai via Emirates Road, it is preferable to move on Sheikh Mohammed bin Zayed Road via Al Shuhada Street and then take the second exit from Sheikh Mohammed bin Zayed Roundabout to Sheikh Mohammed bin Salem Road (E11) towards Al Marjan Island.



## Exit Routes

- Heading through Sheikh Mohammed Bin Salem Road towards Sheikh Mohammed bin Zayed Roundabout to the Emirate of Ras Al Khaimah.
- All visitors should head to Al Jazeera Al Hamra Roundabout (driving against traffic) and then take Al Shuhada Street (driving against traffic) towards Sheikh Mohammed bin Zayed Street. Then at Khalifa Hospital Roundabout, the traffic will be detoured to Emirates Road (either towards Ras Al Khaimah or other emirates).





# Parking Lot (Yanas)

## Access Routes

- For those coming from the Emirate of Ras Al Khaimah, it is preferable to take Sheikh Mohammed Bin Salem Road (E11) to enter the parking lot.
- For those coming from the Emirate of Dubai via Sheikh Mohammed bin Zayed Road (E311), then take the second exit from Sheikh Mohammed bin Zayed Roundabout to Sheikh Mohammed bin Salem Road (E11) towards Al Marjan Island.
- For those coming from the Emirate of Dubai via Emirates Road, it is preferable to move on Sheikh Mohammed bin Zayed Road via Al Shuhada Street and then take the second exit from Sheikh Mohammed bin Zayed Roundabout to Sheikh Mohammed bin Salem Road (E11) towards Al Marjan Island.



## Exit Routes

- All visitors should head to Al Jazeera Al Hamra Roundabout (driving against traffic) and then take Al Shuhada Street (driving against traffic) towards Sheikh Mohammed bin Zayed Street. Then at Khalifa Hospital Roundabout, the traffic will be detoured to Emirates Road (towards Ras Al Khaimah or other emirates).







## Requirements and Standards For Watch Stops

Parking Lot (Jais)

Parking Lot (Yanas)



- The instructions and guidelines issued by the organizers (Police and Logistical Support Personnel) must be adhered to.
- Do not leave the vehicle running for a long time.
- Maintain the rules of public morals and do not violate public taste or the traditions and customs in force in the Emirate of Ras Al Khaimah during the occupation of the parking lot.
- Adhere to the boundaries of the site according to the parking lot.
- It is strictly prohibited to walk towards the beach.
- Keep the area clean and do not throw away, remove, and transport waste to the designated places.
- Barbecuing and lighting fires are prohibited in parking lots.
- Do not use flashlights or loudspeakers, respect the privacy of others, and do not disturb others.
- Do not use fireworks and similar items.
- It is forbidden to get out of the parking lot using bicycles, e-bikes (scooter) and skateboards.
- Keeping children safe and not leaving them unaccompanied inside the parking lot is the responsibility of parents.
- If you are inside the vehicle for a long time, be sure to open the windows and ventilate the vehicle.
- Ensure that the fuel is enough during your stay in the parking lot.
- Non-adherence to traffic laws and safety requirements will be violated through digital systems, cameras (Safe City System), or traffic personnel.



# Parking Lot (Julfhar A)

## Access Routes

- For those coming from the Emirate of Ras Al Khaimah, it is preferable to take Sheikh Mohammed Bin Salem Road (E11), and then take the second exit from Al Jazeera Al Hamra Roundabout by heading to Al Marjan Island to enter the parking lot.
- For those coming from the Emirate of Dubai via Sheikh Mohammed bin Zayed Road, it is preferable to take exit 119 to Al Shuhada Street and then take the second exit through Al Jazeera Al Hamra roundabout to enter the parking lot.
- For those coming from the Emirate of Dubai via Emirates Road, it is preferable to take Khalifa Hospital Exit to Al Shuhada Street and then take the third exit through Al Jazeera Al Hamra roundabout to enter the parking lot.



## Exit Routes

- All visitors should head to Al Jazeera Al Hamra Roundabout and then take Al Shuhada Street towards Sheikh Mohammed bin Zayed Street (whether towards Ras Al Khaimah or other Emirates).





# Parking Lot (Julphar B)

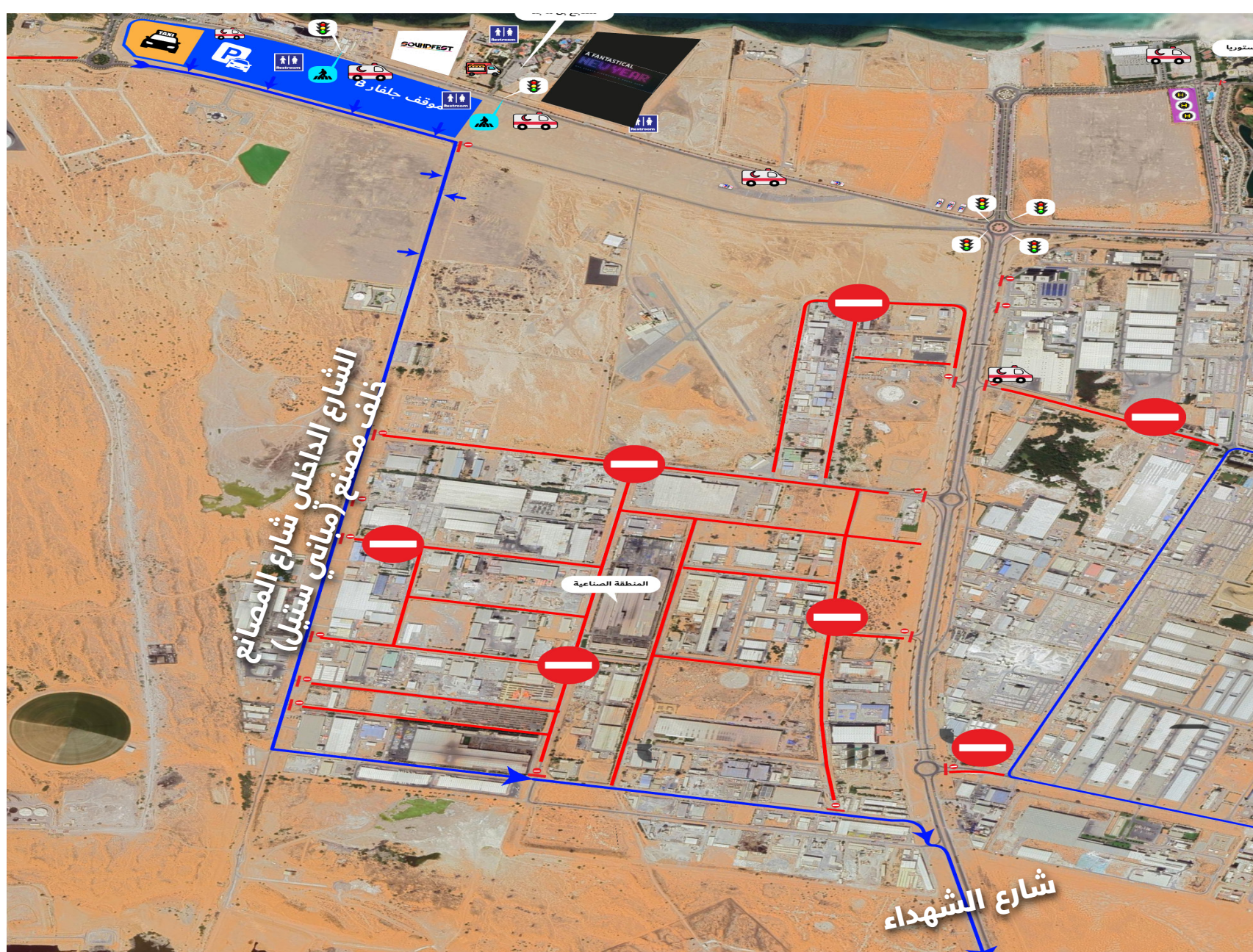
## Access Routes

- For those coming from the Emirate of Ras Al Khaimah, it is preferable to take Sheikh Mohammed Bin Salem Road (E11), and then take the second exit from Al Jazeera Al Hamra Roundabout by heading to Al Marjan Island to enter the parking lot.
- For those coming from the Emirate of Dubai via Sheikh Mohammed bin Zayed Road, it is preferable to take exit 119 to Al Shuhada Street and then take the third exit through Al Jazeera Al Hamra roundabout to enter the parking lot.
- For those coming from the Emirate of Dubai via Emirates Road, it is preferable to take Khalifa Hospital Exit to Al Shuhada Street and then take the second exit through Al Jazeera Al Hamra roundabout to enter the parking lot.



## Exit Routes

- All visitors should go to the internal street, Al Masani Street, behind Mabani Steel Factory, and then take Al Shuhada Street towards Sheikh Mohammed bin Zayed Street (whether towards Ras Al Khaimah or other emirates).







## Requirements and Standards For Public Parking Lots

Parking Lot (Julphar A)

Parking Lot (Julphar B)



- Adhere to use designated pedestrian walkways that provide safe access to event sites and do not fester over barriers.
- The instructions and guidelines issued by the organizers (Police and Logistical Support Personnel) must be adhered to.
- Do not leave the vehicle running for a long time.
- Maintain the rules of public morals and do not violate public taste or the traditions and customs in force in the Emirate of Ras Al Khaimah during the occupation of the parking lot.
- Adhere to the boundaries of the site according to the parking lot.
- Keep the area clean and do not throw away, remove, and transport waste to the designated places.
- Barbecuing and lighting fires are prohibited in parking lots.
- Do not use flashlights or loudspeakers, respect the privacy of others, and do not disturb others.
- Do not use fireworks and similar items.
- It is forbidden to get out of the parking lot using bicycles, e-bikes (scooter) and skateboards.
- Keeping children safe and not leaving them unaccompanied inside the parking lot is the responsibility of parents.
- Walking on public streets is strictly prohibited.
- Non-adherence to traffic laws and safety requirements will be violated through digital systems, cameras (Safe City System), or traffic personnel.



# Parking Lot (Al Rams)

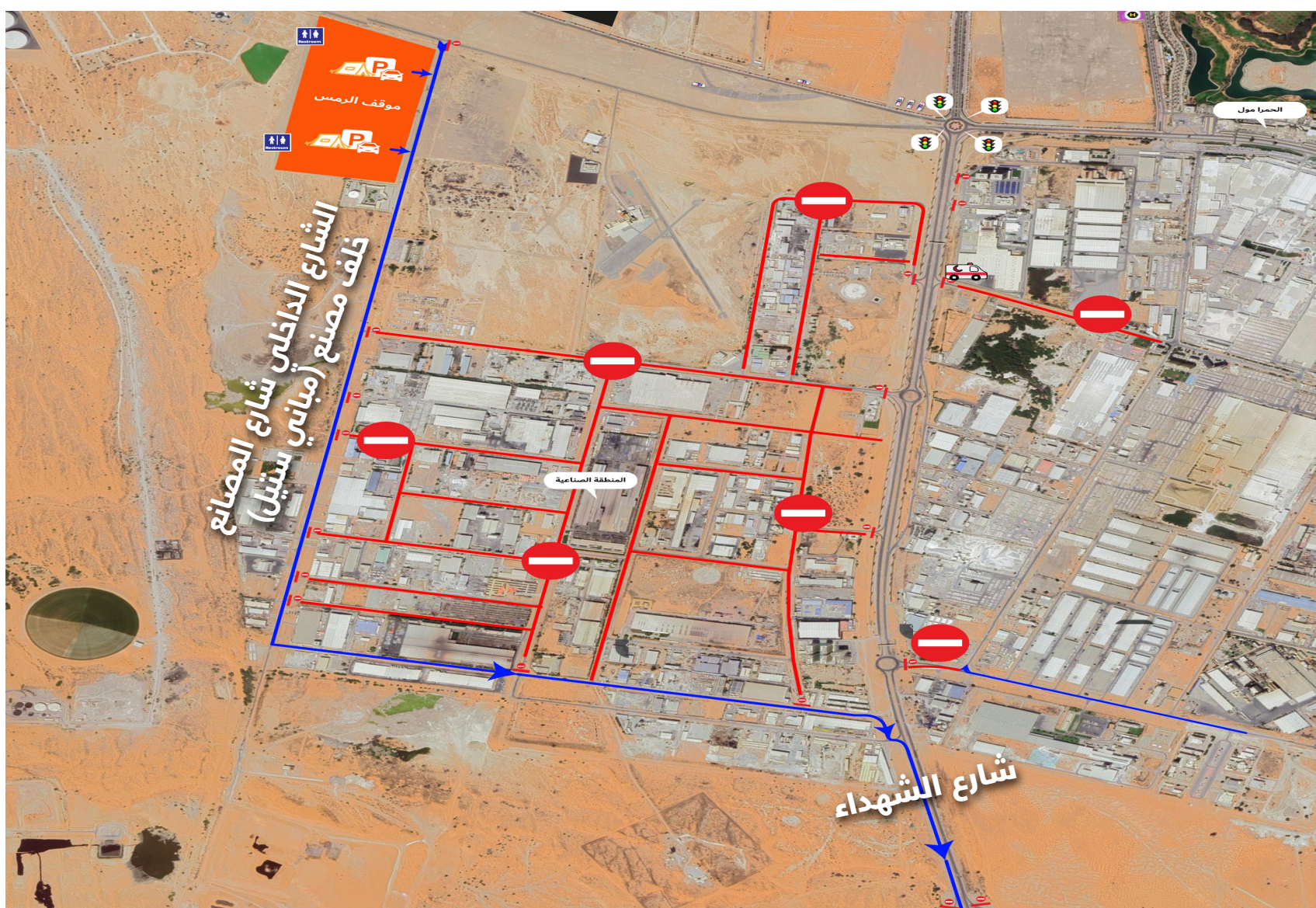
## Access Routes

- For those coming from the Emirate of Ras Al Khaimah, it is preferable to take Sheikh Mohammed Bin Salem Road (E11) and then take the third exit from Al Jazeera Al Hamra Roundabout to Al Shuhada Street to Ras Al Khaimah Radio Roundabout taking the first exit to enter the parking lots.
- For those coming from the Emirate of Dubai via Sheikh Mohammed bin Zayed Road, it is preferable to take exit 119 to Al Shuhada Street and then take the second exit through Al Jazeera Al Hamra roundabout to enter the parking lot.
- For those coming from the Emirate of Dubai via Emirates Road, it is preferable to take Khalifa Hospital Exit to Al Shuhada Street and then take the second exit through Al Jazeera Al Hamra roundabout to enter the parking lot.



## Exit Routes

- All visitors should go to the internal street, Al Masani Street, behind Mabani Steel Factory, and then take Al Shuhada Street towards Sheikh Mohammed bin Zayed Street (whether towards Ras Al Khaimah or other emirates).





# Parking Lot (Dhaya)

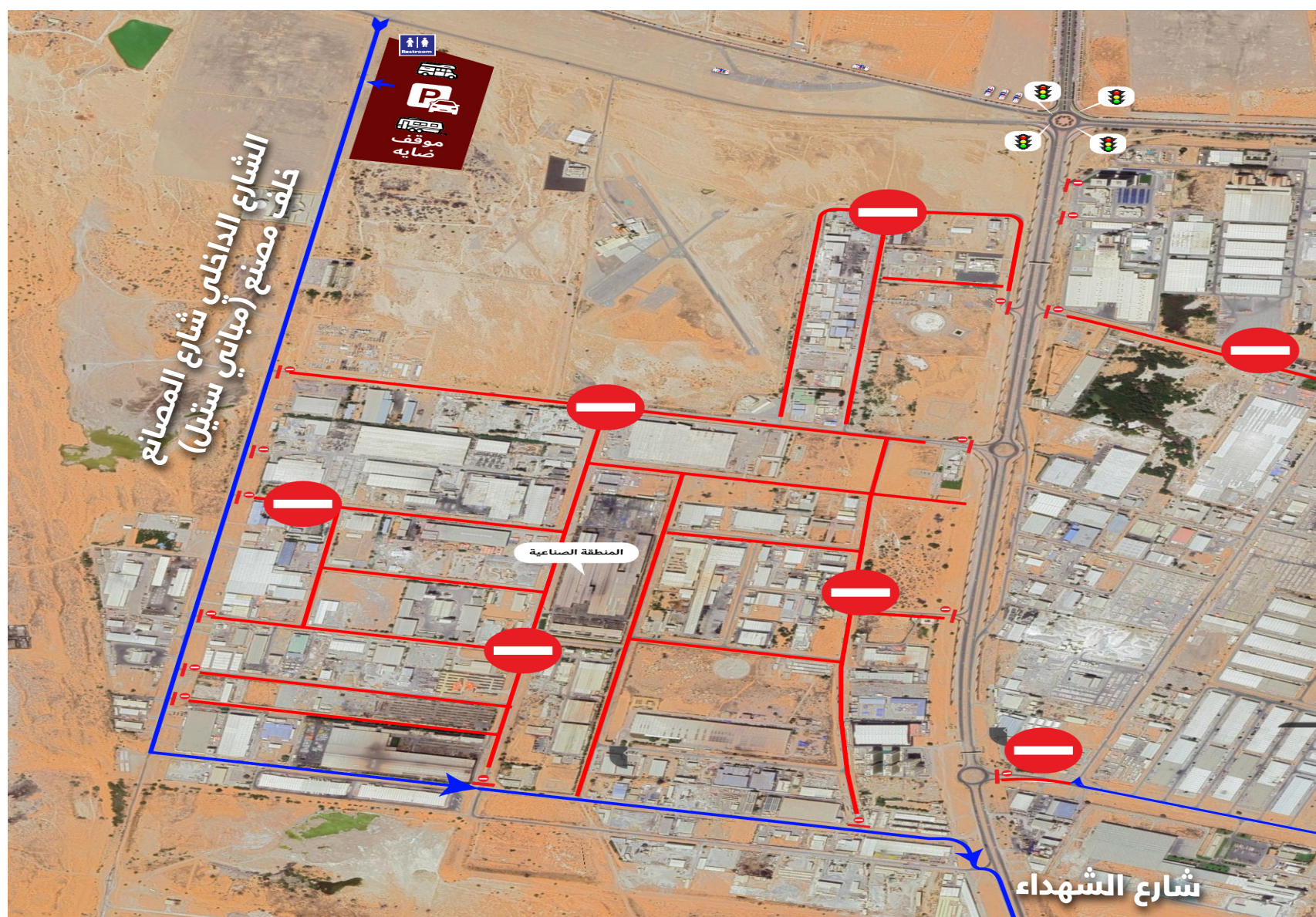
## Access Routes

- For those coming from the Emirate of Ras Al Khaimah, it is preferable to take Sheikh Mohammed Bin Salem Road (E11) and then take the third exit from Al Jazeera Al Hamra Roundabout to Al Shuhada Street to Ras Al Khaimah Radio Roundabout taking the first exit to enter the parking lots.
- For those coming from the Emirate of Dubai via Sheikh Mohammed bin Zayed Road, it is preferable to take exit 119 to Al Shuhada Street and then take the second exit through Al Jazeera Al Hamra roundabout to enter the parking lot.
- For those coming from the Emirate of Dubai via Emirates Road, it is preferable to take Khalifa Hospital Exit to Al Shuhada Street and then take the second exit through Al Jazeera Al Hamra roundabout to enter the parking lot.



## Exit Routes

- All visitors should go to the internal street, Al Masani Street, behind Mabani Steel Factory, and then take Al Shuhada Street towards Sheikh Mohammed bin Zayed Street (whether towards Ras Al Khaimah or other emirates).







## Requirements and Standards For Camping Parking Lots

### Parking Lot (Al Rams)

### Parking Lot (Dhaya)



- Camping parking lots are intended for temporary use only and are not permitted to be used for any commercial activities.
- The instructions and guidelines issued by the organizers (Police and Logistical Support Personnel) must be adhered to.
- Maintain the rules of public morals and do not violate public taste or the traditions and customs in force in the Emirate of Ras Al Khaimah during the occupation of the parking lot.
- Adhere to the boundaries of the site according to the parking lot.
- It is forbidden to use a fence or any blocker around the site.
- Keep the area clean and do not throw away, remove, and transport waste to the designated places.
- Do not damage the desert environment, do not set fire to sand directly, use the Kwar (wooden oven) in the barbecue, dispose of barbecue waste and charcoal appropriately, and do not leave it on the site.
- Adhere to civil defense requirements for fire prevention and safety permanently, while providing a fire extinguisher.
- Do not use loudspeakers, respect the privacy of others, and do not disturb others.
- Do not use fireworks and similar items in the camping parking lot.
- Keeping children safe within the camp area is the responsibility of parents.
- The maximum speed of vehicles within the camping area is 20 km/h and it is forbidden to drive sand bikes within the camping area.
- In case of violation of any of the requirements specified above, the camping will be removed.

Camping may be removed at any time if required.

Non-adherence to traffic laws and safety requirements will be violated through digital systems, cameras (Safe City System), or traffic personnel.



# Al Marjan Island

## Access Routes

- For those coming from the Emirate of Ras Al Khaimah, take Sheikh Mohammed Bin Salem Road (E11) and then take the second exit from Al Jazeera Al Hamra Roundabout towards Al Jazeera Al Hamra, and making sure to take the right routes to go to Al Marjan Island.

For those coming from the Emirate of Ras Al Khaimah via Sheikh Mohammed bin Zayed Road, it is preferable to take exit 119 to Al Shuhada Street and then take the

- third exit from Al Jazeera Al Hamra roundabout to reach Al Marjan Area, and making sure to take the right routes to go to Al Marjan Island.

For those coming from the Emirate of Dubai via Emirates Road, it is preferable to take Khalifa Hospital Exit to Al Shuhada Street and then take the third exit from Al Jazeera Al Hamra roundabout to reach Al Marjan Area, and making sure to take the right routes to go to Al Marjan Island.



## Exit Routes

- All visitors should go to Jazeerat Al Marjan roundabout, and take the first exit towards the Emirate of Umm Al Quawain through Al Ittihad street.





# Street closures

## 2023/12/31

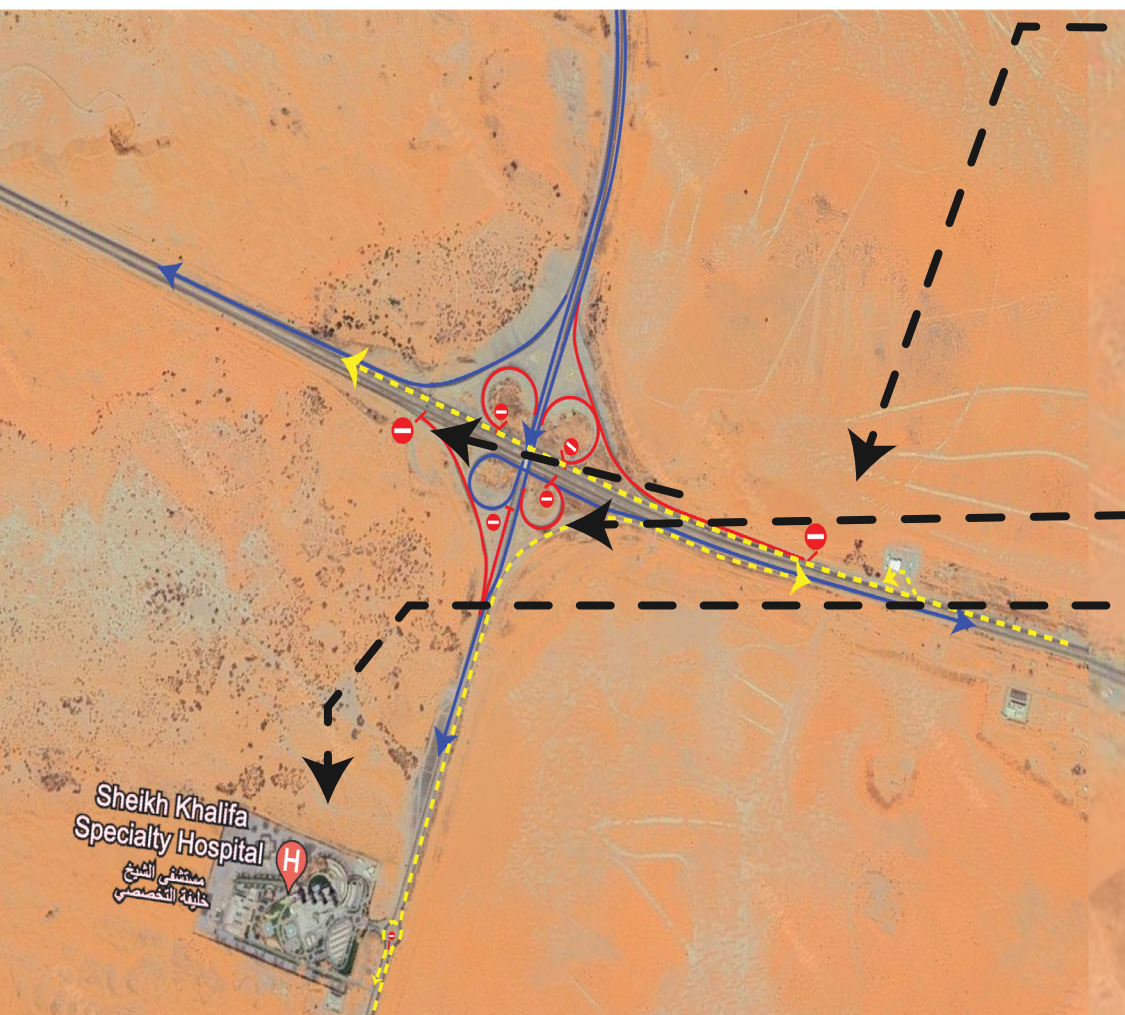
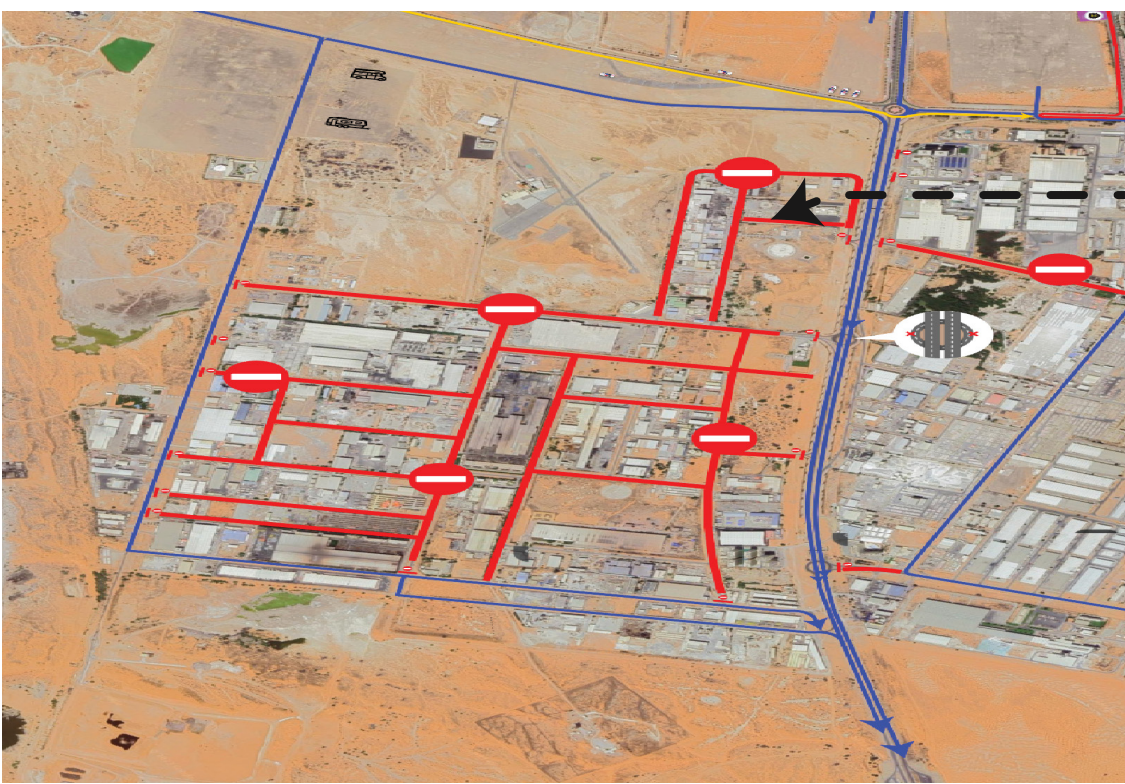

2:00 PM



Vienna Street behind Al Hamra Mall will be closed for arrivals towards Astoria Hotel from Al Shuhada Street.

For those coming from the Emirate of Umm Al Quwain: Etihad Street E11 will be closed before Al Marjan Roundabout heading to the Emirate of Ras Al Khaimah.

11:00 PM



The entrances will be closed in the Al Jazeera Al Hamra area (Al Mansak Street and Al Ma'alim Street).

For those coming from Ras Al Khaimah: Sheikh Mohammed Bin Salem Road E11 will be closed from the Dolphin Roundabout towards Al Marjan Island.

The internal street (Masani Street) behind the factory (Mabani Steel) inside Al Hamra Island will be closed.

For those coming from the Emirate of Ras Al Khaimah: Exit 119 will be closed after the Emirates Petrol Station on Sheikh Mohammed bin Zayed Street E311 towards Al Shuhada Street and Al Marjan Island.

For those coming from the Emirate of Dubai: Exit 119 on Sheikh Mohammed bin Zayed Street E311 will be closed to Al Shuhada Street and Al Marjan Island, as well as exit 119 towards Khalifa Hospital.

Emirates Road/Al Abir Road (Khalifa Hospital Entrance) will be closed for arrivals from the Emirate of Dubai or the Emirate of Ras Al Khaimah towards Al Marjan Island via Al Shuhada Street.



# Maritime Closure

## 2023/12/24

Al Murjan Sea Closure will be done as of 2023-12-24



For inquiries and contact regarding the mechanism for yacht access to the event site  
**+97172432274**

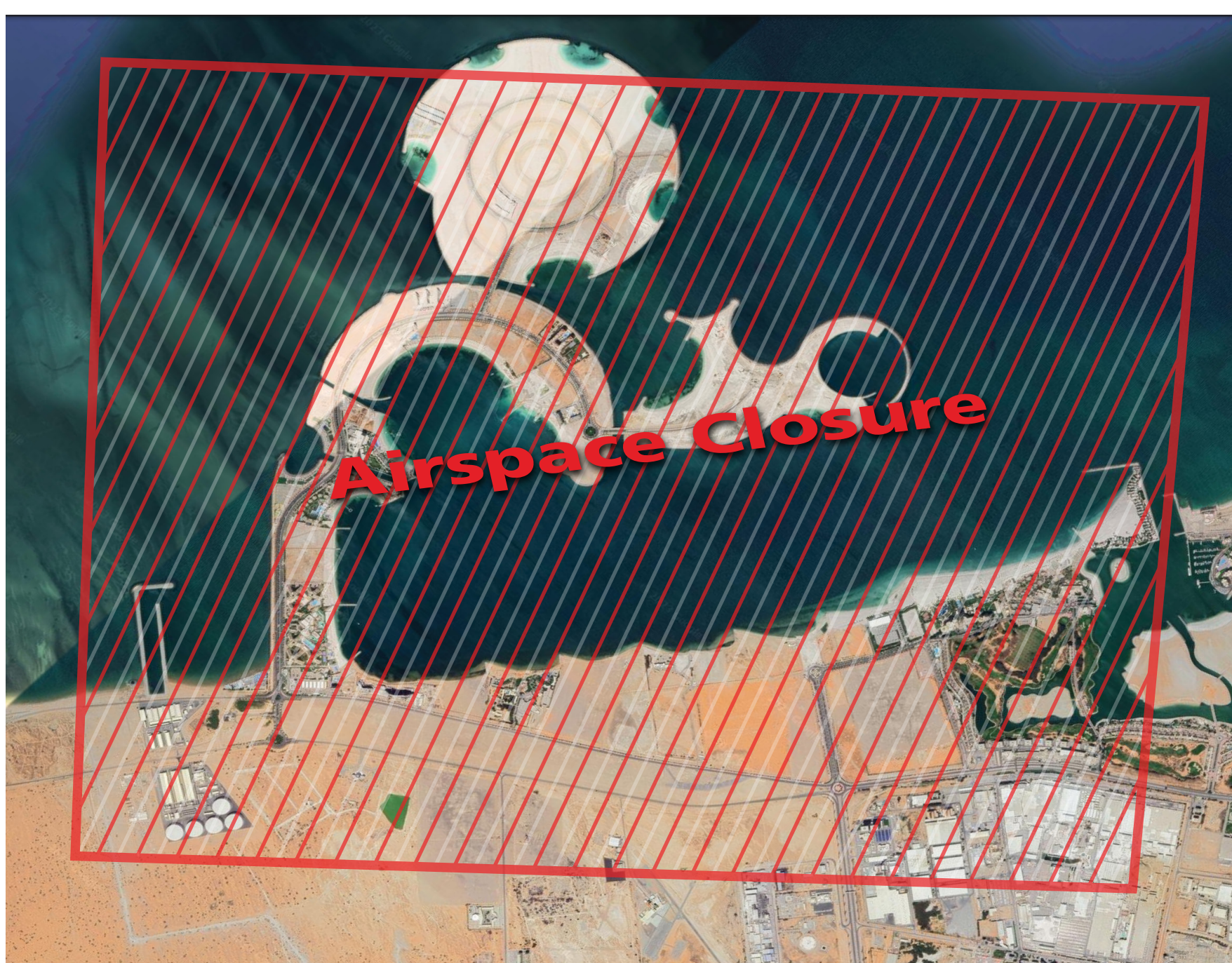
**Note: On 2023/12/31, only authorized yachts are allowed to cross at the authorized berth until 9:00 PM at the latest**

# Airspace Closure

## 2023-12-31

at 6:00 PM

The airspace closure of Al Murjan area will take place at 6:00 pm on 2023-12-31





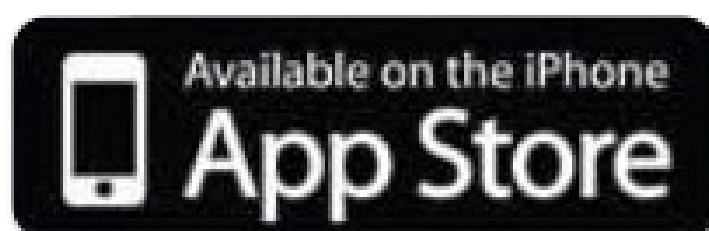


**In the event of any  
changes to these routes,  
follow the instructions  
of Ras Al Khaimah Police  
officers and logistics  
staff. Please listen to  
Ras Al Khaimah Radio on**

**FM 103.5**



**Download the App now**







**The use of electric scooters  
is not allowed on roads or  
within parking areas.**














**Please park your vehicles in  
assigned spaces and avoid  
stopping on the sides of the road**





# Accommodations in Ras Al Khaimah








	The Cove Rotana Resort Ras Al-Khaimah
	The Ritz Carlton Al Hamra
	RIXOS BAB AL BAHR
	Doubletree by Hilton Resort & Spa Marjan Island
	WALDORF ASTORIA
	MARJAN ISLAND RESORT & SPA FZ-LLC
	The Ritz Carlton Al Wadi
	Hilton Ras al Khaimah Beach Resort
	Double Tree by Hilton Ras Al Khamiah
	InterContinental Ras Al Khaimah Mina Al Arab Resort & Spa
	MOVENPICK RESORT ALMRJAN ISLAND



	Mangrove Hotel
	Hilton Garden Inn Ras Al Khaimah
	Al Hamra Residence
	Hampton by Hilton Marjan Island
	Radisson Resort Ras Al Khaimah Marjan Island



	ROYALVIEW HOTEL
	Bin Majid Beach Hotel
	BM Beach Resort
	Action Hotel Ras Al Khaimah LLC
	Citymax Hotel





”

# F.A.Q.

**Do I have to register to attend the New Year's Eve 2024 celebrations in Ras Al Khaimah?**

**No registration is required to attend New Year's Eve 2024 celebrations.**

**Are parking free or do I need to book in advance?**

**Yes, all parking are free and available to all visitors.**

**When is the last time to arrive at the parking locations?**

**You must be in the parking lot by 11:00 pm.**

**Where can I report lost items, missing children or emergencies?**

**You can go to the security points available in the jurisdiction, go to the Comprehensive Al Jazeera Al Hamra Police Station, or call the emergency number (999).**

**Can I watch the New Year's Eve show from all the parking lots specified in the guide?**

**You can watch the fireworks through the vehicle at Jais, Yanas, Al Rams and Dhaya Parking Lots. As for Julphar A, B Parking Lot, you must move to the watch area through pedestrian crossings.**

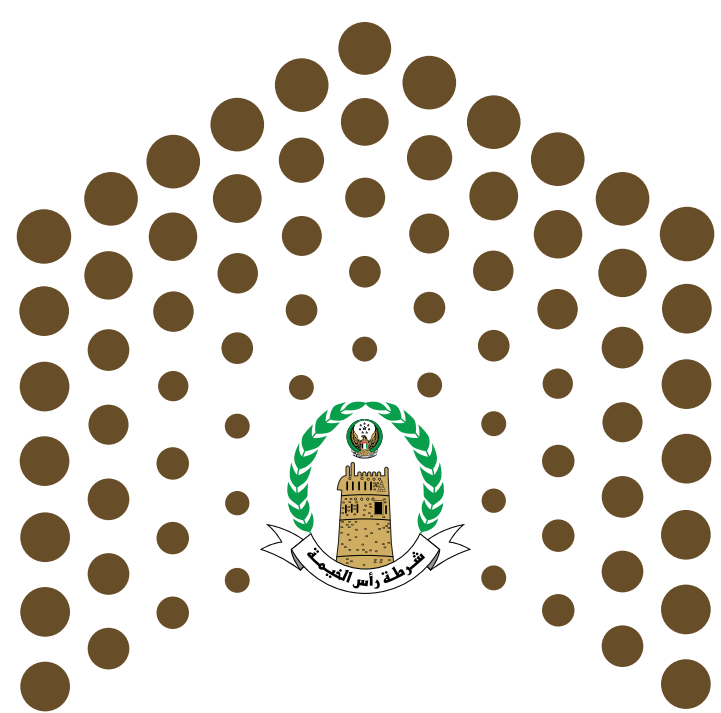
“



**Your safety  
is our priority**







**الفريق الدائم لتأمين  
وتنظيم الفعاليات**

**Permenant Team for events  
Securing and Organizing**



**rakpoliceghq**





Don't miss the  
**dazzling fireworks shows**  
celebrating New Year's Eve 2024  
at 12 am Al Marjan Island  
in Ras Al Khaimah.

